

STRONGER TOGETHER!



sbpv.ch

Membership fee
CHF 190.- *
a year

Join the SBEA now, and give your industry a better future.

Join today. It only takes five minutes, and you can do it using the QR code or via: [Registration](#)



Recommend us to your colleagues.

Recommend us to three or more people who then sign up for a membership, and at the end of the year we will send you a Coop voucher worth CHF 190.-. If you help us gain 10 or more new members, you will get a Coop voucher worth CHF 500.-.

GET IN TOUCH WITH US:

Swiss Bank Employees Association (SBEA)

sbpv.ch

info@sbpv.ch

Tel. 0848 000 885

* Including legal protection
now just CHF 337.60/year

What we do

We're there for everyone who wants more. With our years of experience and extensive network, we are there to offer personal support, and to represent everyone who works in the banking and insurance sectors.

Working together for financial services.

■ BUILDING STRONG PARTNERSHIPS

We encourage strong, cooperative relationships between companies and employee representatives to help reconcile competing interests, achieve consensus-based agreements, and prevent disputes.

■ AGREEMENT ON CONDITIONS OF EMPLOYMENT FOR BANK EMPLOYEES (ACEBE)

This overarching employment agreement negotiated by the SBEA, sets minimum standards for your working conditions. The Agreement is reviewed every three years and renegotiated as appropriate.

■ AGREEMENT ON THE RECORDING OF WORKING TIME (ARWT)

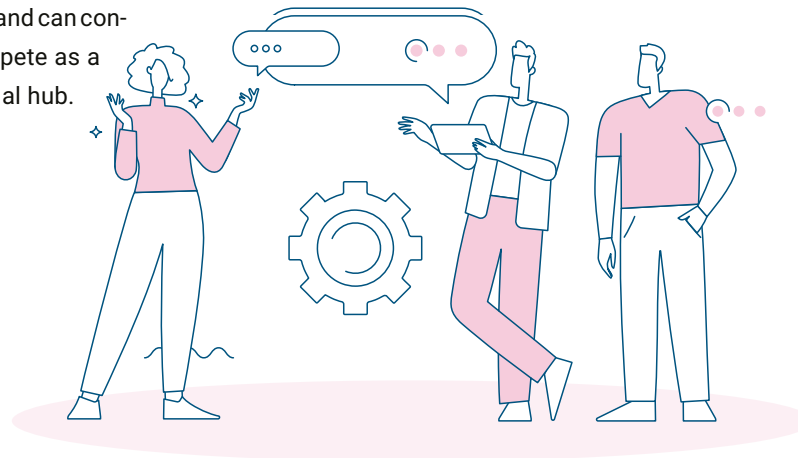
The Agreement on the recording of working time is another overarching employment agreement, negotiated jointly by the social partners. It is designed to safeguard the health of employees in the financial and insurance sectors.

■ OUR MEMBERSHIPS

The SBEA is a member of the Swiss Trade Union Confederation (SGB), and cultivates a network of international relationships as part of the umbrella organisation UNI Global Union.

■ REVIEWING AND IMPROVING YOUR WORKING CONDITIONS

The SBEA is committed to helping all employees in Switzerland's financial sector achieve greater job satisfaction and financial security. Our work helps to make the industry more attractive for the next generation of talent, and to ensure that Switzerland can continue to compete as a world financial hub.



Working for you.

■ SUPPORT FOR YOUR RESTRUCTURING PROCESSES

We can help you by negotiating social plans and making sure you comply with all legal restructuring requirements.

■ LABOUR LAW COVER

Your membership includes labour law cover as standard, so you can be confident you're getting the best possible advice.

■ ADVICE

We can advise you on career planning, professional development, equality in the workplace and work-life balance.

■ SALARY SURVEY

Every two years the SBEA carries out its salary survey to promote greater transparency within the financial sector. Our members receive a detailed report on the results.

■ PROFESSIONAL DEVELOPMENT

As a member, you can take advantage of advanced training opportunities provided by our partners.

■ SKILLAWARE

The skillaware self-assessment shows you whether your skills and expertise are in line with the financial sector's latest requirements, and how you can hone them for the future.

■ INSURANCE

SBEA members can work with us to reduce their insurance premiums for a variety of policies, including home insurance, buildings insurance, vehicle cover, legal cover and top-up health insurance.

■ INFORMATION

You can count on us to keep you informed on all the latest news and developments in the banking sector.

■ SHOPPING AND LEISURE ACTIVITIES

We have negotiated a range of exclusive offers with companies across a variety of different industries, so you can benefit from your membership outside of the office.